
	Pietro Fiorentini S.p.A. Via Enrico Fermi 8/10 36057 - Arcugnano (VI) - Italy	<a href="http://www.fiorentini.com">www.fiorentini.com</a>
	Revision 07 :	December 2019

Technical Specifications

**Turbine gas meter, series Type-C, IM-TM-CT- steel**

<b>Applications:</b>	Natural gas / Argon / Butane / Ethane Nitrogen / Carbon dioxide / Carbon monoxide Air / Methane / Pentane / Propane	
<b>Meter body:</b>	strength calculation - according RT0D & EN 13445 material - steel [cast / bar stock / welded] flange connection - according to ASME B16.5/EN1092 raised faced Pressure rating & mounting - see table below surface treatment - painted - Yellow RAL1004 installation length (L) - 3x nominal diameter design pressure - see below table design temperature range - depending on body construction & Materials max. operating pressure - according flange classification, see below table operating temp. range - -10° / +65° C (MID -10° / +55° C) (Lower temperatures on Request)	
<b>Feature:</b>	flow direction - MID horizontal - QA Horizontal/Vertical pressure point - Standard EO6 pipe-port - On request ¼ NPT plugged temperature measuring point - Pocket for ø6mm sensor (2 pocket if No HF on Shaft, 1x pocket if HF on Shaft required) Lubrication system - Standard: manual Oil-Pump high frequency sensor - Optional HF on Main Shaft & HF on Turbine Wheel	
<b>Index:</b>	Standard: 8 digit index , on request Optical Encoder Index low frequency sensor - 2x low frequency NO reed contact & 1 x anti fraude NC reed contact reading - cubic meters [ m <sup>3</sup> ]	
<b>Calibration:</b>	authority - Standard MID or QA calibration rangeability - determined by approval & technical Qmin. See table below accuracy - Qmin ≤ Q < Qt ±2% & Qt ≤ Q ≤ Qmax ±1% (Qt according to EN12261) repeatability - 0.1% or better	
<b>Approvals:</b>	Compliant with EN12261 MID Compliant with 2014/32/EU - Tifernogas Certificate : I-2142-MI002-TG013 ATEX Compliant with 2014/34/EU - Receipt TUV n° 0206120 PED Compliant with 2014/68/EU - Lloyd's register Certificate 0038/PED/MLN PRJ11090550/02/01	
<b>Documents:</b>	declaration of conformity, calibrations certificate, installation and operation manual	
<b>Options:</b>	on request	

Rating	Qmax.	Qmin.	Size	LF pulses	Length	Mounting Bolts									
						Acc.to EN EN1092						Acc. To ASME-B16.5			
						PN10	PN16	PN25	PN40	PN64	PN100	125-150	300	600	
range	m <sup>3</sup> /h	m <sup>3</sup> /h	metric ( inch )	Imp. /m <sup>3</sup>	mm										
G40 <sup>(1)</sup>	65	13	50 ( 2" ) <sup>(3)</sup>	10	3 x DN	4x M16				4x M20	4x M24	4x 5/8" UNC	8x 5/8" UNC	8x 5/8" UNC	
G65 <sup>(2)</sup>	100	10		10											
G100 <sup>(2)</sup>	160	16		1											
G100	160	8	80 ( 3" )	1	3 x DN	8x M16				8x M20	8x M24	4x 5/8" UNC	8x 3/4" UNC	8x 3/4" UNC	
G160	250	13		1											
G250	400	20		1											
G400	650	32		1											
G160	250	13	100 ( 4" )	1	3 x DN	8x M16		8x M20		8x M24	8x M27	8x 5/8" UNC	8x 3/4" UNC	8x 7/8" UNC	
G250	400	20		1											
G400	650	32		1											
G650	1000	50		1											
G400	650	32	150 ( 6" )	1	3 x DN	8x M20		8x M24		8x M30	12x M30	8x 3/4" UNC	12x 3/4" UNC	12x 1" UNC	
G650	1000	50		1											
G1000	1600	80		0,1											
G1600	2500	130		0,1											
G650	1000	50	200 ( 8" )	1	3 x DN	8x M20	12x M20	12x M24	12x M27	12x M33	12x M33	8x 3/4" UNC	12x 7/8" UNC	12x 1-1/8" UNC	
G1000	1600	80		0,1											
G1600	2500	130		0,1											
G2500	4000	200		0,1											
G1600	2500	130	250 ( 10" )	0,1	3 x DN	12x M20	12x M24	12x M27	12x M30	12x M33	12x M36	12x 7/8" UNC	16x 1" UNC	16x 1-1/4" UNC	
G2500	4000	200		0,1											
G1600	2500	130		0,1											
G2500	4000	200		0,1											
G4000	6500	320	300 ( 12" )	0,1	3 x DN	12x M20	12x M24	16x M27	16x M30	16x M33	16x M39	12x 7/8" UNC	16x 1-1/8" UNC	20x 1-1/4" UNC	

**Note:**

- <sup>(1)</sup> QA Calibration ONLY
- <sup>(2)</sup> MID Calibration with rangeability 1:20 is available ONLY in combination with HP calibration ≥ 4 bar
- <sup>(3)</sup> HF Wheel Not available on this models



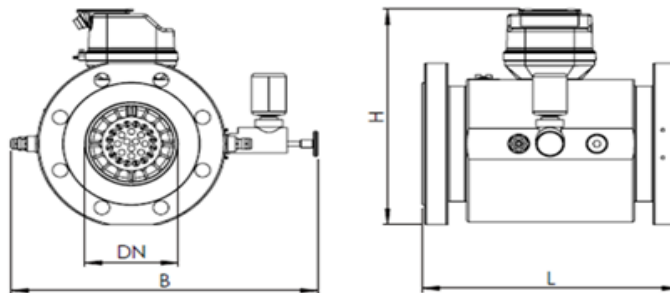
Pietro Fiorentini S.p.A.  
Via Enrico Fermi 8/10  
36057 - Arcugnano (VI) - Italy

[www.fiorentini.com](http://www.fiorentini.com)

Revision 07 : December 2019

Technical Specifications  
**Turbine gas meter, series Type-C, IM-TM-CT- steel**

IMTM-CT meters may be produced with several pressure ratings and several body materials.  
According to customer requests, B and/or H dimension(s) may change  
(example, when cryogenic long neck, HF shaft/wheel, and/or high pressure oil pump are used).



Steel Body					
DN	PN/ANSI (1)	L ± 5 [mm]	B ± 10 [mm]	H ± 10 [mm]	Weight Kg
50 mm (2")	PN16-ANSI150	150	310	250	20
	PN64-ANSI300	150	310	260	20
	PN100-ANSI600	150	310	260	20
80 mm (3")	PN16-ANSI150	240	330	260	30
	PN64-ANSI300	240	330	300	41
	PN100-ANSI600	240	330	300	43
100 mm (4")	PN16-ANSI150	300	360	285	49
	PN64-ANSI300	300	345	315	52
	PN100-ANSI600	300	420	330	55
150 mm (6")	PN16-ANSI150	450	410	350	82
	PN64-ANSI300	450	410	375	95
	PN100-ANSI600	450	440	390	112
200 mm (8")	PN16-ANSI150	600	380	395	88
	PN64-ANSI300	600	400	420	113
	PN100-ANSI600	600	420	440	160
250 mm (10")	PN16-ANSI150	750	445	455	138
	PN64-ANSI300	750	470	480	172
	PN100-ANSI600	750	510	510	245
300 mm (12")	PN16-ANSI150	900	500	515	180
	PN64-ANSI300	900	530	540	300
	PN100-ANSI600	900	560	560	328

(1) For the PN25-PN40 classes please contact the factory for availability