



Diaphragm Gas Meter SI-G1,6 / SI-G2,5 / SI-G4

Operation

The meter consists of two sections made of thermosetting material which move side by side, thus enabling the gas to pass through the two measuring chambers; inside such chambers, two diaphragms in rubber-coated polyester (NBR) shift causing the connecting rod/crank assembly to move. The rotations of this assembly are counted by the index. The two half-chambers of such device, which causes an extremely flat error curve through the whole flow rate range and a particularly low pressure absorption, are perfectly and separately calibrated through valve stroke and advanced opening setting. The use of selected materials and the optimised design ensures constant performances throughout the meter life.

Both production cycle and incoming material undergo a strict quality control. The calibration is carried out at Kalekalip Metrological Laboratory by highly qualified technicians and by means of sophisticated electronic test benches.

Features

- Galvanised steel powder-painted body for the maximum corrosion resistance.
- Compact sizes.
- Low noise.
- Magnetic coupling to the index.
- Synthetic diaphragm in rubber-coated polyester (NBR).
- High measuring stability.
- Antireturn device.
- Suitable for natural gas, manufactured gas, LPG, technical gas and others.
- Working temperature range: from -25 °C up to +55 °C.
- Colour : White (Ral 9016)

Regulations

The meters G1,6 - G2,5 - G4 are built in compliance with the following regulations, directives and recommendations:

- EN 1359:1998/A1:2006
- MID (2004/22/EC)
- OIML R6 and R31

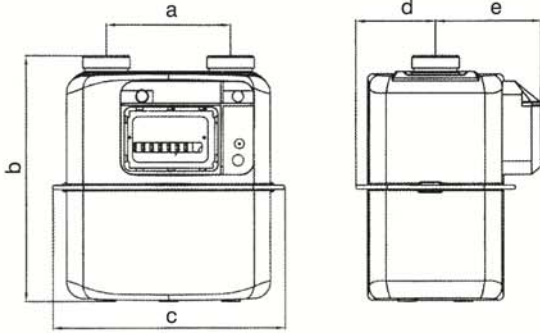
LF Pulse Module



Diaphragm Gas Meter

SI-G1,6 / SI-G2,5 / SI-G4

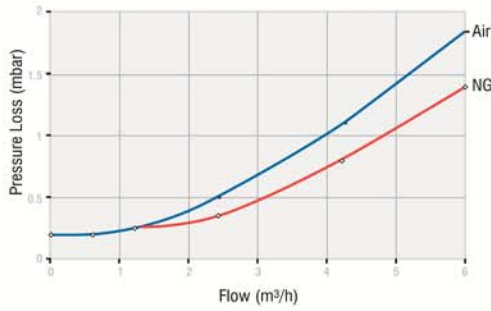
KaleKalıp



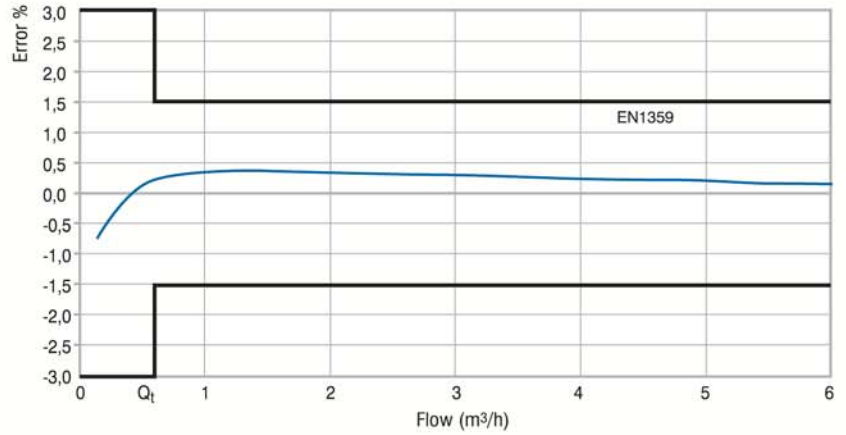
| TYPE | CYCLING VOLUME dm ³ | MEASURING RANGE m ³ /h | THREAD SIZE* | COUPLING* DN | DIMENSIONS (mm) | | | | | WEIGHT kg |
|---------|-----------------------------------|--------------------------------------|--------------|-----------------|-----------------|-----|-----|----|----|--------------|
| | | | | | a | b | a | d | e | |
| SI-G1,6 | 1,2 | 0,016-2,5 | 1 1/4" | 32 | 110 | 217 | 204 | 70 | 85 | 2 |
| SI-G2,5 | 1,2 | 0,025-4,0 | 1 1/4" | 32 | 110 | 217 | 204 | 70 | 85 | 2 |
| SI-G4 | 1,2 | 0,040-6,0 | 1 1/4" | 32 | 110 | 217 | 204 | 70 | 85 | 2 |

* Fitting diameters and thread sizes can be produced according to request.

Pressure Loss



ERROR CURVE



CHARACTERISTICS

- 0.016 m³/h - 6 m³/h measurement range
- Suitable for Natural Gas and LPG
- Operating pressure max. 0.5 bar
- Leak test pressure at 0.75 bar
- TS 5910 EN 1359
- MID Type approval (2004/22/EC)
- Index with pulse output 1 imp = 0.01 m³
- Synthetic diaphragm
- Magnetic Coupling
- 0.8 mm galvanized meter covers
- Operating temperature -25 °C / +55 °C
- Storage temperature -30 °C / +60 °C
- White (Ral 9016)
- Electrostatic powder paint
- Special locking mechanism of studs against high torsional and bending moments
- Special cover to protect moving parts and slides from piping and installation contamination
- Maintenance free



KaleKalıp

Sefaköy, Tevfikbey Mh. İstiklal Cd. No. 29
34295 K.Çekmece - İstanbul / TÜRKİYE

info@kalekalip.com.tr
www.kalekalip.com.tr

Tel. : +90 212 624 06 70
Fax : +90 212 579 55 29